

Installation Instructions

I - Sheet Number INS-HS141 Rev.-



Hood Shield

**For proper installation and best possible fit, please read all instructions BEFORE you begin.
For technical assistance or to obtain missing parts, please call Customer Relations at 1-800-344-8759.**

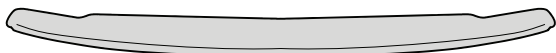
Important Safety Information



- CAUTION - Before driving, ensure that the hood shield is properly secured to vehicle.
- Do not use automatic "brush-style" car washes.
- Do not use cleaning solvents of any kind.
- Periodically check all components for tightness.

Contents

NOTE: Actual product may vary from illustration.



Hood shield



Self Tapping screw x6



Aluminium Flat Washer x6



Bump On x4
(98024)

Tools Required



Car Wash Supplies



Clean Towel



Phillips
screwdriver

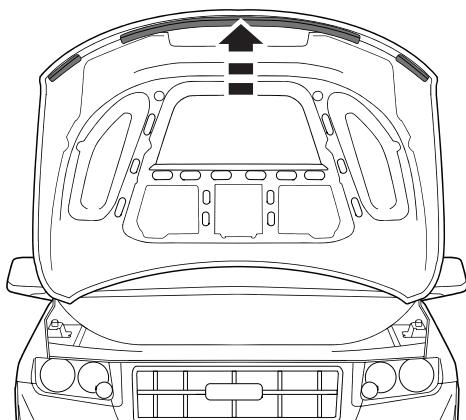
Preparation Before Painting / Installation

- A trial fit is recommended to ensure proper positioning and fit.
- Check fit of parts before painting as we will not accept the return of modified or painted parts.
- Wash and dry your vehicle to remove any debris and/or dirt from the installation area.

Installation Steps

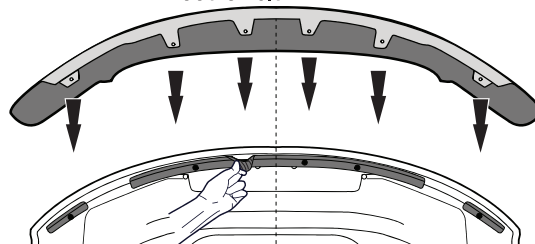
NOTE: Actual application may vary slightly from illustrations.

Open hood.



1

Carefully separate the hood seal / gasket from the areas of the hood that align with the hood shield tabs, and remove (6) plastic seal retaining fasteners that align with the pre-drilled holes and tabs in the hood shield.



NOTE: Exercise extreme caution not to tear or damage the hood seal / gasket when separating from hood.

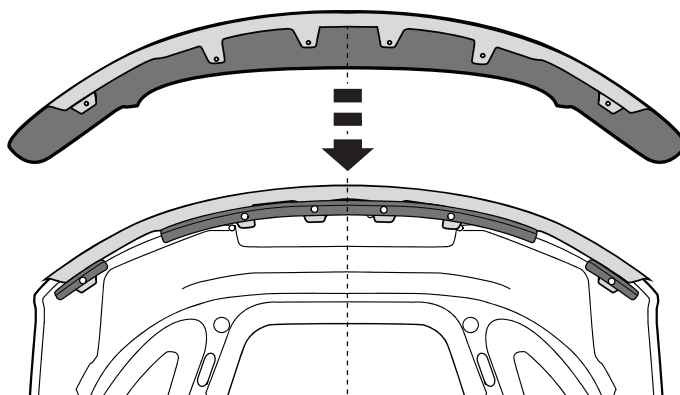
2

Installation Steps

NOTE: Actual application may vary slightly from illustrations.

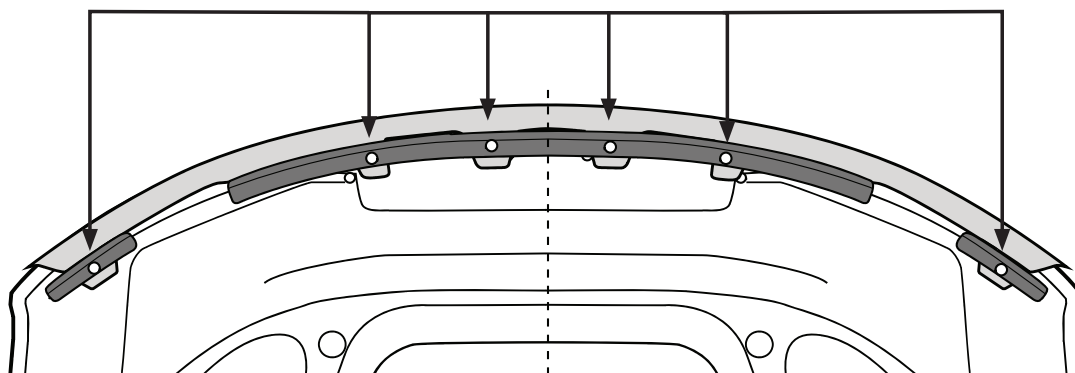
Reposition the hood shield with the tabs sliding **BETWEEN** the hood and rubber seal and align with holes.

3



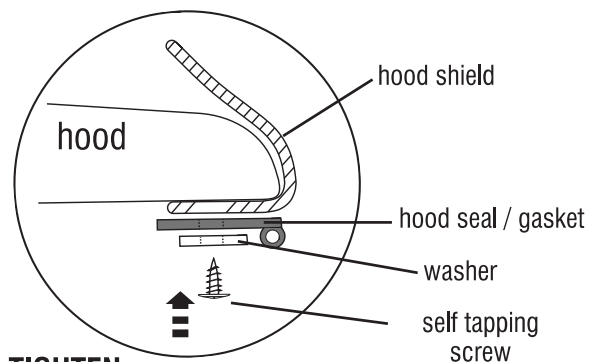
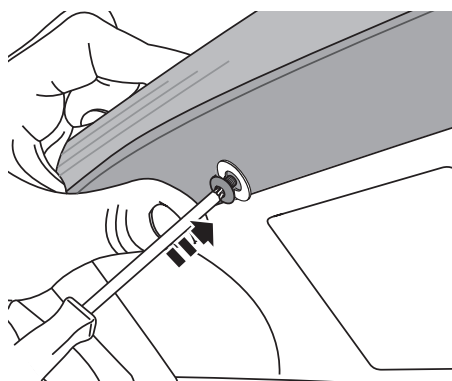
Locate the (6) flanges.

4



Insert (6) screws and washers through the rubber gasket, hood shield, and into the hood. Securely tighten.

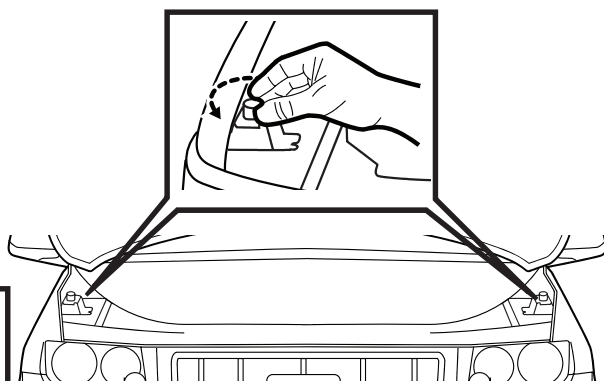
5



DO NOT OVER TIGHTEN

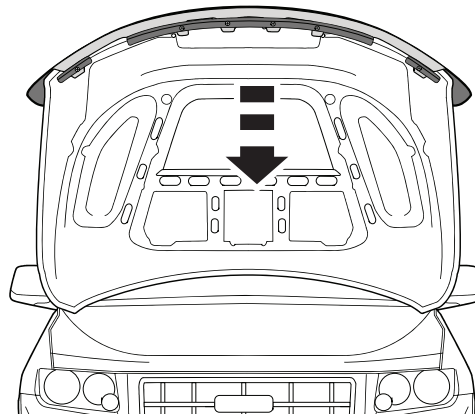
Turn both of the hood bumpers counter clockwise 1 1/2 turns.

6



Close Hood.

7

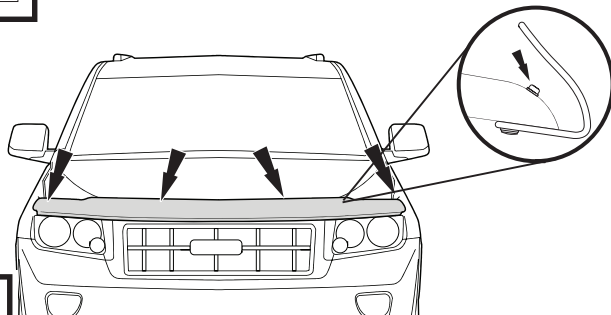


Installation Steps

NOTE: Actual application may vary slightly from illustrations.



Apply (4) bump ons to surface of hood.



8

Care and Cleaning

- Wash only with mild soap & dry with a clean cloth.



The material that your product is made from can be recycled. Please also consider recycling the packaging that your product came in.



Congratulations!

You have purchased one of the many quality Husky® branded products. We take the utmost pride in our products and want you to enjoy years of satisfaction from your investment. We have made every effort to ensure that your product is top quality in terms of fit, durability, finish and ease of installation.



1-800-344-8759 • Visit us at [huskyliners.com](https://www.huskyliners.com)

© 2024 Husky Liners, Inc. All rights reserved.

Husky® and the Husky logo are trademarks of Husky Liners, Inc.