



# INSTALLATION MANUAL

60669

## Level of Difficulty

Easy

## Weight Capacity

Gross trailer weight (GTW)	30,000 lbs.
Vertical load	7,500 lbs.

## Parts List

Item	Qty	Description
1	1	Extension arm, GMC 2020+
2	2	Carriage bolt, M10 x 30 mm

## Tools Required

Ratchet	Socket set
Torque wrench	--

## Torque Specifications

M10 bolt	35 ft-lbs.
Use above torque setting unless otherwise noted	

## Product Registration

CURT stands behind our products with industry-leading warranties. Provide feedback and help us to improve our products by registering your purchase at: [warranty.curtgroup.com/surveys](https://warranty.curtgroup.com/surveys)

## ⚠ WARNING

Never exceed the vehicle manufacturer's recommended towing capacity. This may result in separation, damage to 5th wheel hitch, vehicle, trailer and / or cause serious injury or death.

Provide this entire installation manual to the end-user. Fully instruct and demonstrate the operation of this 5th wheel hitch to the end user. Include the importance of observing all warnings contained herein, including warning labels on 5th wheel hitch mid section. Serious injury or death may result if the warnings below are not observed.

Do not expose hands, body parts or clothing anywhere between the truck and trailer. Extreme care should be observed to avoid serious injury to self, property and observers.

Never position yourself or others under the trailer's kingpin area (danger zone) during coupling and uncoupling. Improperly coupled trailers can separate and drop without notice.

## Product Photo



## NOTICE

Before you begin installation, read all instructions thoroughly.

Proper tools will improve the quality of installation and reduce the time required.

To help prevent damage to the product or vehicle, refer to the specified torque specifications when securing hardware during the installation process.

## Maintenance

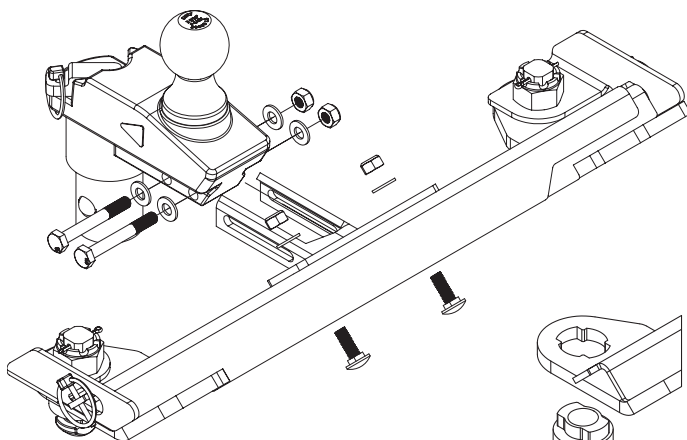
To protect the product, wax after installing. Regular waxing is recommended to add a protective layer over the finish. Do not use any type of polish or wax that may contain abrasives that could damage the finish.

Mild automotive detergent may be used to clean the product. Do not use dish detergent, abrasive cleaners, abrasive pads, wire brushes or other similar products that may damage the finish.

# ASSEMBLY

## Parts List

Item	Qty	Description
1	1	Extension arm, GMC 2020+
2	2	Carriage bolt, M10 x 30 mm



GM 2020+

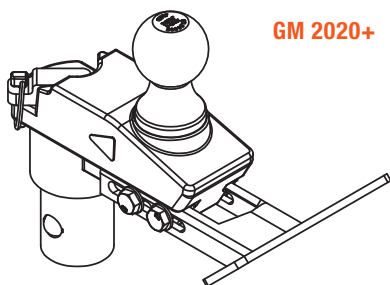
Puck  
Orientation

# INSTALLATION

## Step 1

Insert the extension arm into the channel on the front of the gooseball.

Snug the hardware but do not fully tighten.



GM 2020+

## Step 2

Slide the extension arm forward until the face meets the flat of the cross arms.

Secure the extension arm to the driver- / passenger-side cross arms using the provided M10 x 30 mm carriage bolts, two M10 flat washers and two M10 nylon lock nuts. Torque hardware to 35 ft-lbs.

