

BACKRACK™

FUNCTION AND STYLE FOR TODAY'S TRUCKS

INSTALLATION INSTRUCTIONS #INST262:

BACKRACK KIT #30943

2024 Current Chev/GMC Silverado, Sierra EV

READ THIS NOW!

Your truck should look like the one shown. If you think you are missing any parts, think that this part number is not for your truck or have any installation questions, call our customer service department at toll free:

800-265-8137 or locally **905 849-3633**.

Other ways to reach BACKRACK:

Fax **905-849-4116**

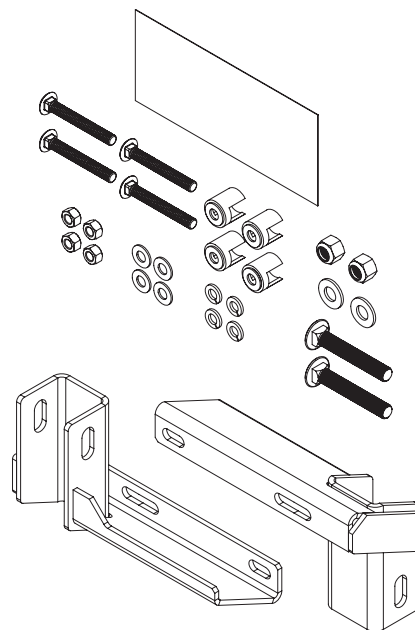
email: techsupport@backrack.ca



The BACKRACK is secured to your truck with a pair of "Stake Pocket Bolts" specifically designed for your make and model of truck. These bolts mount into each of the two front stake pockets. The BACKRACK assembly sits on the bed rails of your truck and is secured to these Stake Pocket Bolts. If your truck has a BEDLINER we suggest you remove it to install the Stake Pocket Bolts

PARTS LIST FOR KIT #30943

PART	DESCRIPTION	QTY
RMB549D	Rear Mount Bracket Driver Side	1
RMB549P	Rear Mount Bracket Passenger Side	1
HARDWARE BAG972		
INST262	Installation Instructions	1
FYZ058	Carriage Bolt	4
NS001	Spacer Clamp	4
FYZ001	3/8"-16 Hex Nut	4
FYZ002	3/8" Lock Washer	4
FYZ003	3/8" Flat Washer	4
B32714	Bolt Hardware Bag	1
DB9X8ET	Poly Bag	1



FOR MORE INFORMATION SCAN HERE!



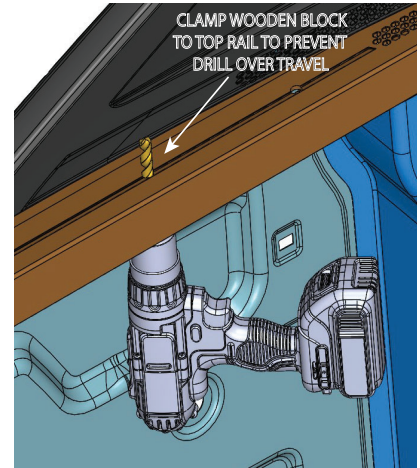
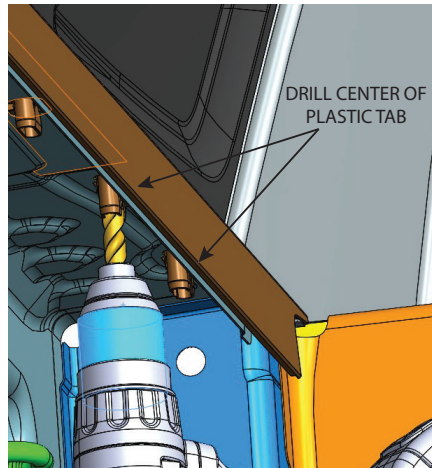
BACKRACK™

FUNCTION AND STYLE FOR TODAY'S TRUCKS

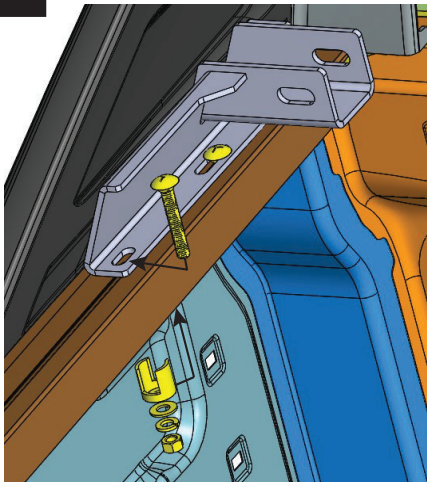
1

On the underside of the truck rail, drill 3/8" hole thru center of plastic tabs as shown.

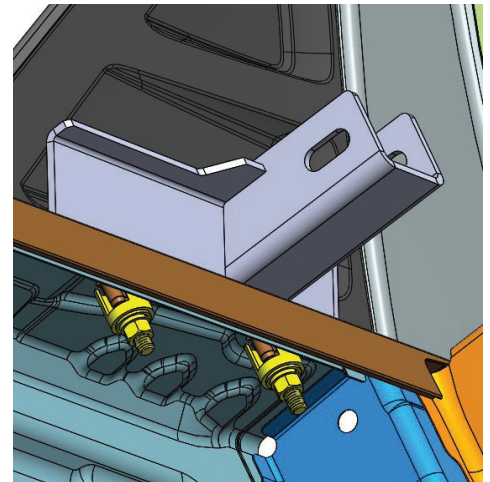
It is recommended to clamp a wooden block to the top of rail to prevent the drill from over travel.



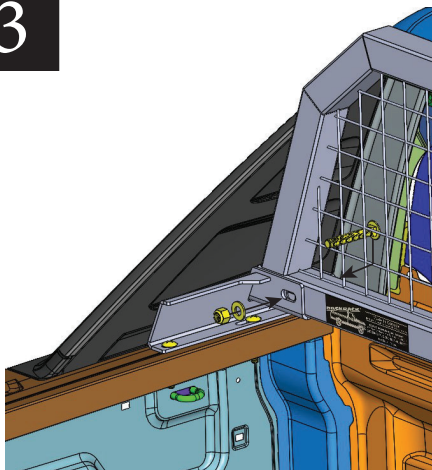
2



Install the carriage bolts as shown in the diagram. Finger tighten the nut with the nut spacer and washers.



3



Fasten Backrack Assembly to the Rail Mount Brackets as shown.
Center the Backrack assembly on the truck, check distance to cab (approx. 3/4") and final torque all bolts starting with the nuts on the inside of the truck bed and finally the main BACKRACK carriage bolt

